

Prepared in cooperation with the Wisconsin Department of Transportation  
and the Wisconsin Department of Natural Resources

## Highway-Runoff Quality, and Treatment Efficiencies of a Hydrodynamic-Settling Device and a Stormwater-Filtration Device in Milwaukee, Wisconsin



Scientific Investigations Report 2010–5160

**Cover** (clockwise from top left). View of eastbound I-794, view of westbound I-794, installation of the stormwater-filtration device, and installation of the hydrodynamic-settling device. Photographs by Robert Pearson, Wisconsin Department of Transportation.

# **Highway-Runoff Quality, and Treatment Efficiencies of a Hydrodynamic-Settling Device and a Stormwater-Filtration Device in Milwaukee, Wisconsin**

By Judy A. Horwath, Roger T. Bannerman, and Robert Pearson

Prepared in cooperation with the  
Wisconsin Department of Transportation  
and the Wisconsin Department of Natural Resources

Scientific Investigations Report 2010–5160

**U.S. Department of the Interior**  
**U.S. Geological Survey**

**U.S. Department of the Interior**  
KEN SALAZAR, Secretary

**U.S. Geological Survey**  
Marcia K. McNutt, Director

U.S. Geological Survey, Reston, Virginia: 2011

For more information on the USGS—the Federal source for science about the Earth, its natural and living resources, natural hazards, and the environment, visit <http://www.usgs.gov> or call 1-888-ASK-USGS

For an overview of USGS information products, including maps, imagery, and publications, visit <http://www.usgs.gov/pubprod>

To order this and other USGS information products, visit <http://store.usgs.gov>

Any use of trade, product, or firm names is for descriptive purposes only and does not imply endorsement by the U.S. Government.

Although this report is in the public domain, permission must be secured from the individual copyright owners to reproduce any copyrighted materials contained within this report.

Suggested citation:

Horwath, J.A., Bannerman, R.T., and Pearson, Robert, 2010, Highway-Runoff Quality, and Treatment Efficiencies of a Hydrodynamic-Settling Device and a Stormwater-Filtration Device in Milwaukee, Wisconsin: U.S. Geological Survey Scientific Investigations Report 2010–5160, 75 p.





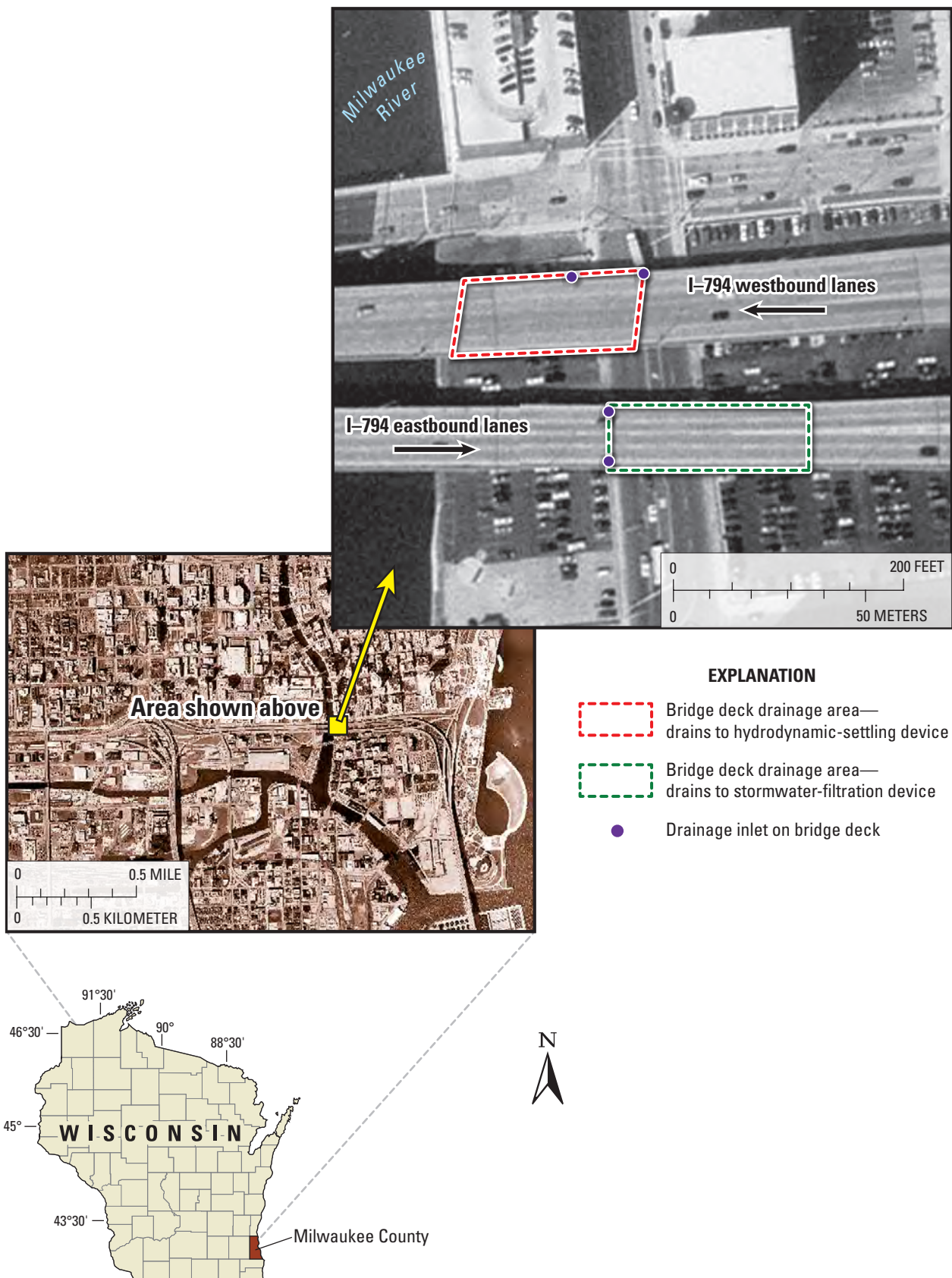




QA/QC	Quality-assurance/quality-control
RPD	Relative percent difference
SFD	Stormwater-filtration device
SOL	Summation of loads
SRS	Standard reference sample
SS	Suspended sediment
TCu	Total copper
TDS	Total dissolved solids
TP	Total phosphorus
TSS	Total suspended solids
TZn	Total zinc
USEPA	U.S. Environmental Protection Agency
USGS	U.S. Geological Survey
VA	Visual accumulation
WDNR	Wisconsin Department of Natural Resources
WisDOT	Wisconsin Department of Transportation
WSLOH	Wisconsin State Laboratory of Hygiene







**Figure 1.** Location of monitored sites for the hydrodynamic-settling and stormwater-filtration devices in the City of Milwaukee, Wisconsin. Photographs by the Wisconsin Department of Transportation.







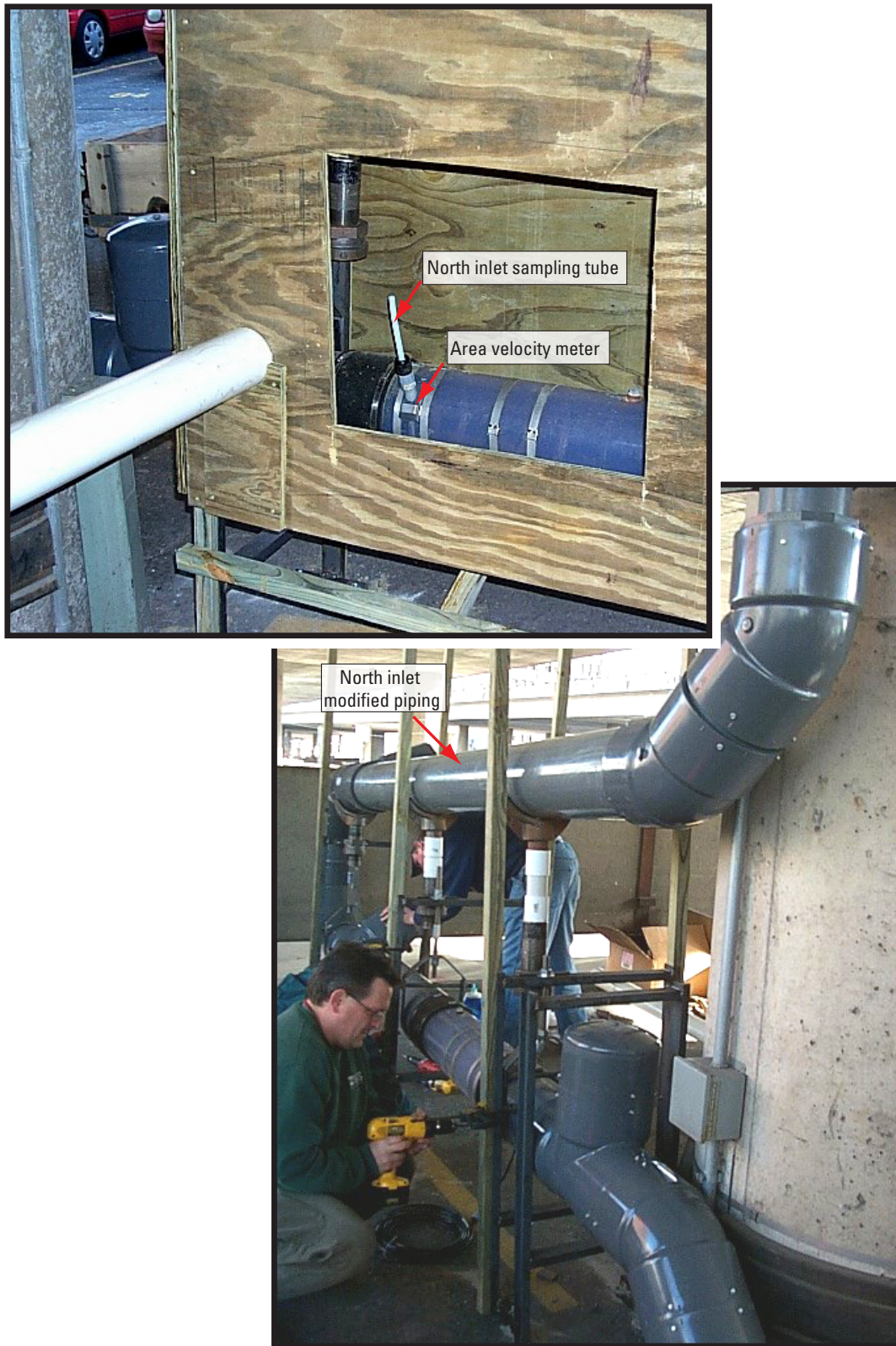












**Figure 8.** Piping modification for the hydrodynamic-settling device.













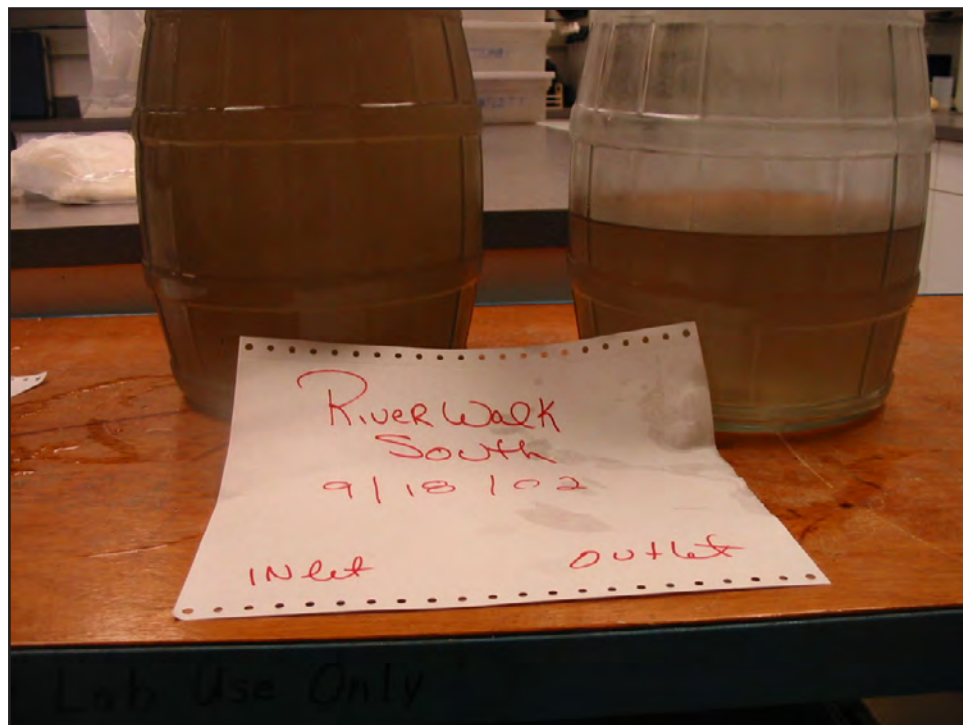








**Figure 13.** Example of inlet and outlet hydrodynamic-settling device event samples.



**Figure 14.** Example of inlet and outlet stormwater-filtration device event samples.

























**Figure 21.** Cleanout of the settling chamber for the hydrodynamic-settling device.



**Figure 22.** Cleanout of the 8-inch inlet pipe for the hydrodynamic-settling device.

















- Waschbusch, R.J., Selbig, W.R., and Bannerman, R.T., 1999, Sources of phosphorus in stormwater and street dirt from two urban residential basins in Madison, Wisconsin, 1994–95: U.S. Geological Survey Water-Resources Investigations Report 99–4021, 47 p.
- Weigel, B.M., Emmons, E., Stewart, J.S., and Bannerman, R., 2005. Buffer width and continuity for preserving stream health in agricultural landscapes, Wisconsin Department of Natural Resources Research/Management Findings, Wisconsin Department of Natural Resources, Madison, WI, PUB–SS–756 2005, 4 p.
- Wierl [Horwath], J.A., Giddings, E.M.P., Bannerman, R.T., 1998, Evaluation of a Method for Comparing Phosphorus Loads from Barnyards and Croplands in Otter Creek Watershed, Wisconsin: U.S. Geological Survey Fact Sheet FS 168–98, 4 p.
- Wierl, [Horwath], J.A., Rappold, K.F., and Amerson, F.U., 1996, Summary of the land-use inventory for the nonpoint-source evaluation monitoring watersheds in Wisconsin: U.S. Geological Survey Open-File Report 96–123, 23 p.





































































